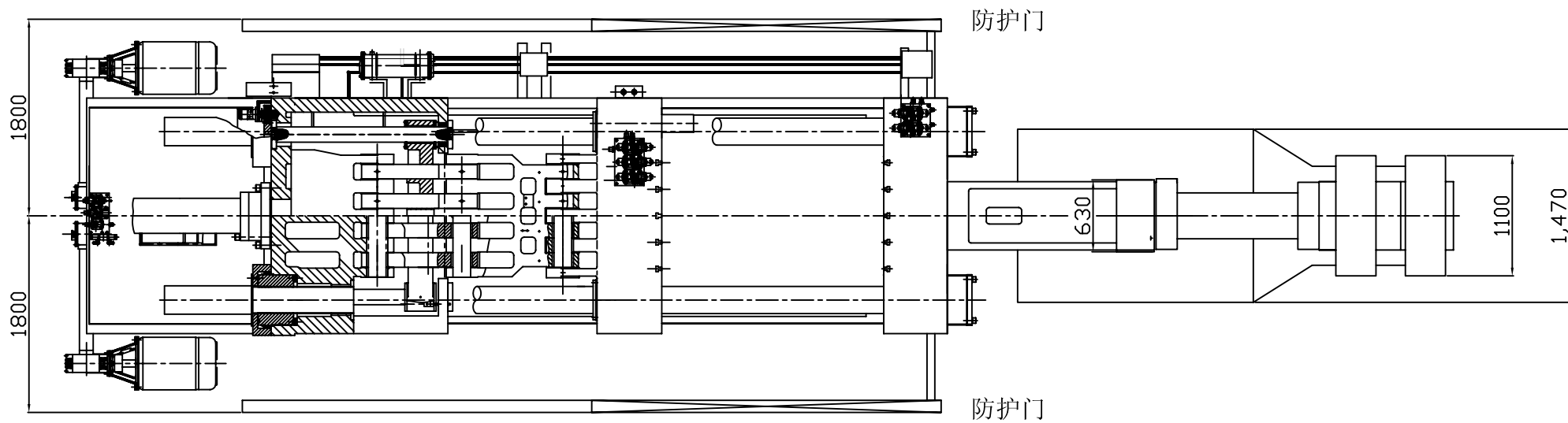
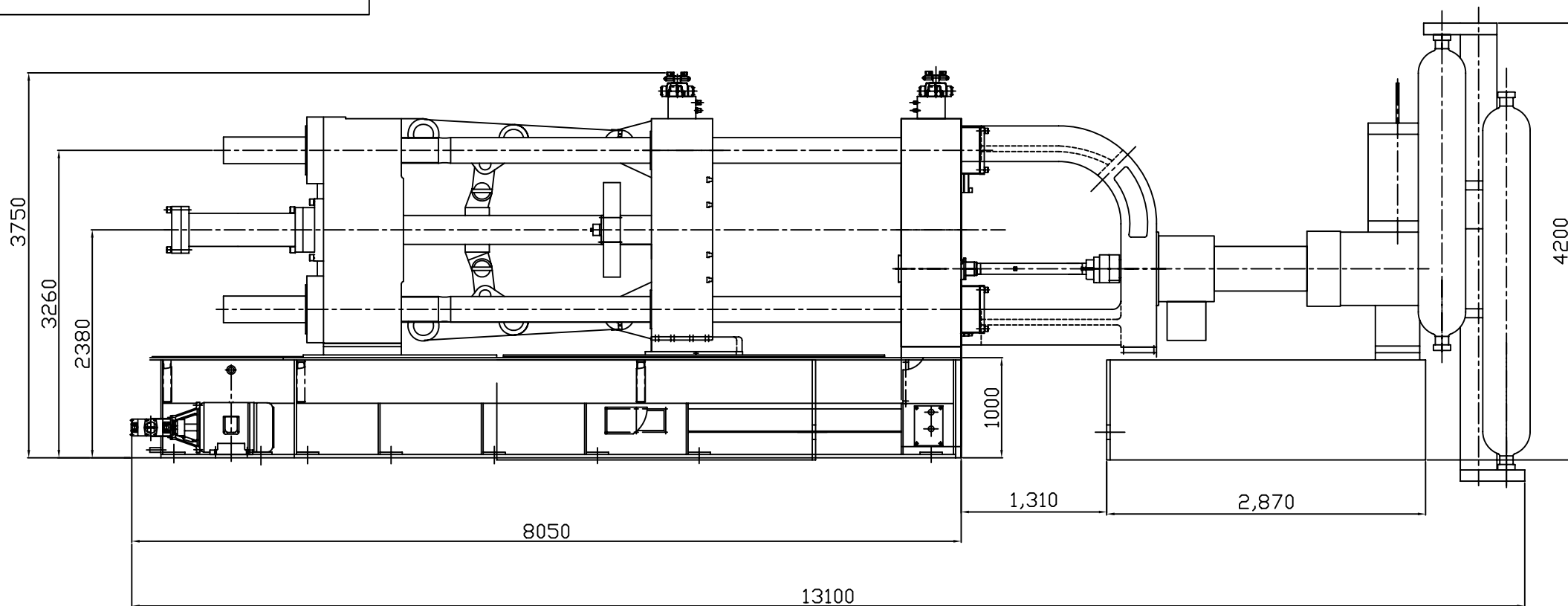
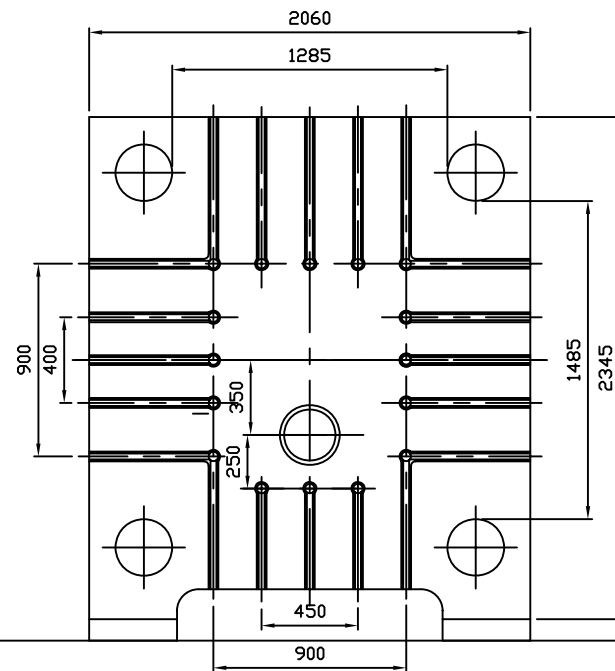
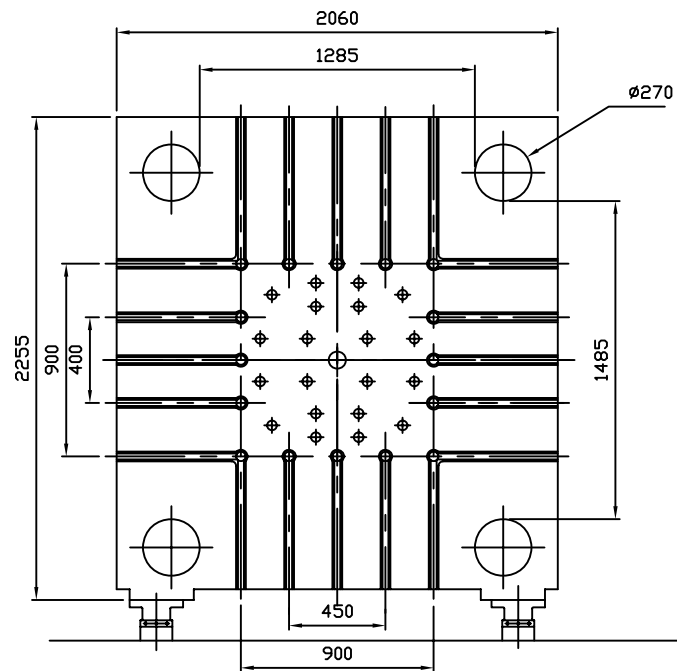


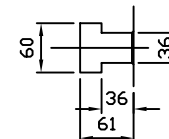
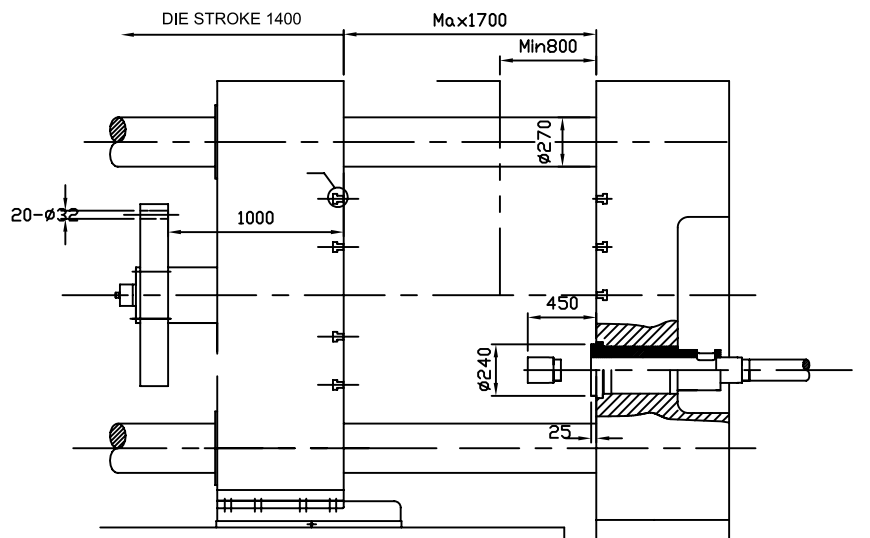
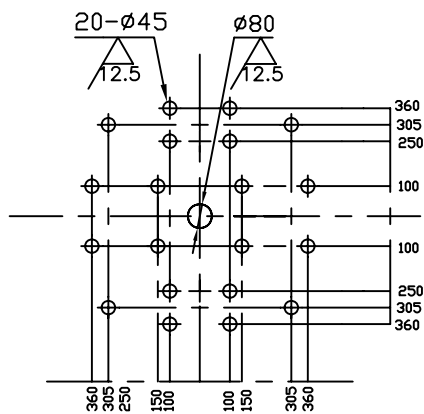
DC2000D OUTLINE DIMENSION



DC2000D PLATEN DIMENSION



EJECTOR HOLE POSITION



上海三基冷室压铸机主要技术参数表
SANJI COLD CHAMBER
DIE-CASTING MACHINE SPECIFICATIONS

项目 ITEMS	单位 UNIT	DC-2000D	
锁模部分 CLAMPING UNIT			
锁模力	CLAMPING FORCE	KN	20000
模板尺寸	Platen Size	mm	2060x2255
哥林柱间隔	Space between Tie Bar	mm	1285X1485(WxH)
哥林柱直径	Tie Bar Diameter	mm	270
锁模行程	Die Stoke	mm	1400
模板厚薄距离	Die Height	mm	800-1700
射料部分 INJECTION UNIT			
射料力	Injection Force	KN	530-1350
跟踪距离	Plunger Tip Penetration	mm	450
射料位置	Shot Position	mm	-350
压射头直径	Standard Tip Diametre	mm	110-160
射料重量(铝)	Casting Weight	Kg	29
铸造压力	Injection Pressure	Mpa	56-126
最大铸造面积 (40MPa)	Max Injection Area (40MPa)	cm2	5,000
顶出部分 EJECTION UNIT			
顶出压力	Ejection Force	KN	650
顶出行程	Ejection Stroke	mm	260
油泵与电机 Pump and Motor			
系统压力	Hydraulic Presure	15Mpa	
电机	Electric Motor:		
1.液压泵电机	For Hydraulic Pump	2-45kw 380V	
2.调模电机	For Die Height Adjust	USE Hydralic Motor 用液压马达	
3.润滑电机	For Lub.Pump	2-20w 220V	
其它 OTHERS			
油箱容积	Tank Capacity	litre	3000
机身尺寸	Overall dimensions	(L x W x H)m	12 X 3.7X 4.6
出机重量	Height of Machine	TON	125