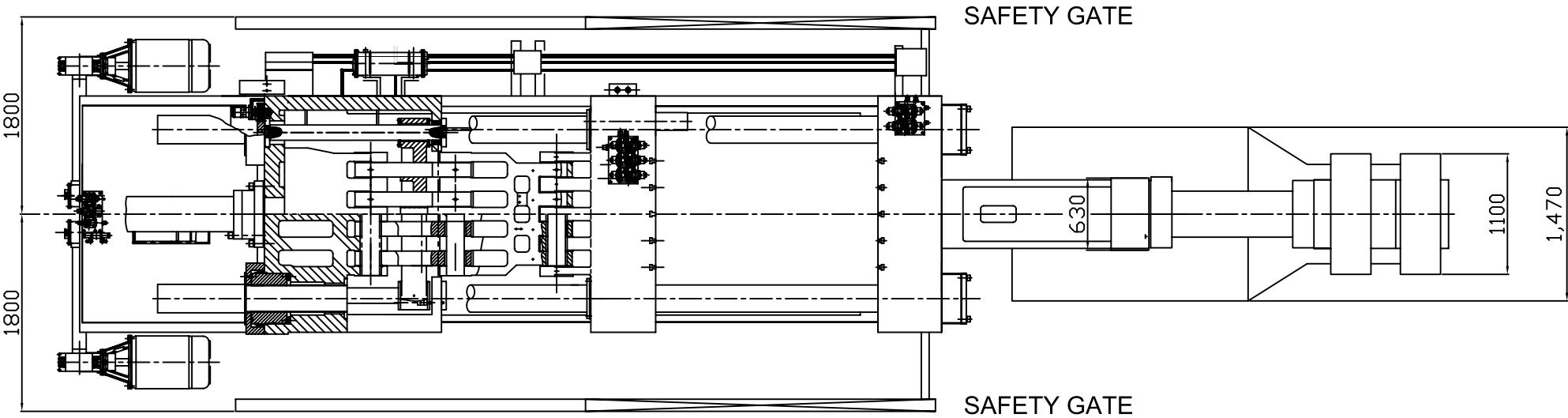
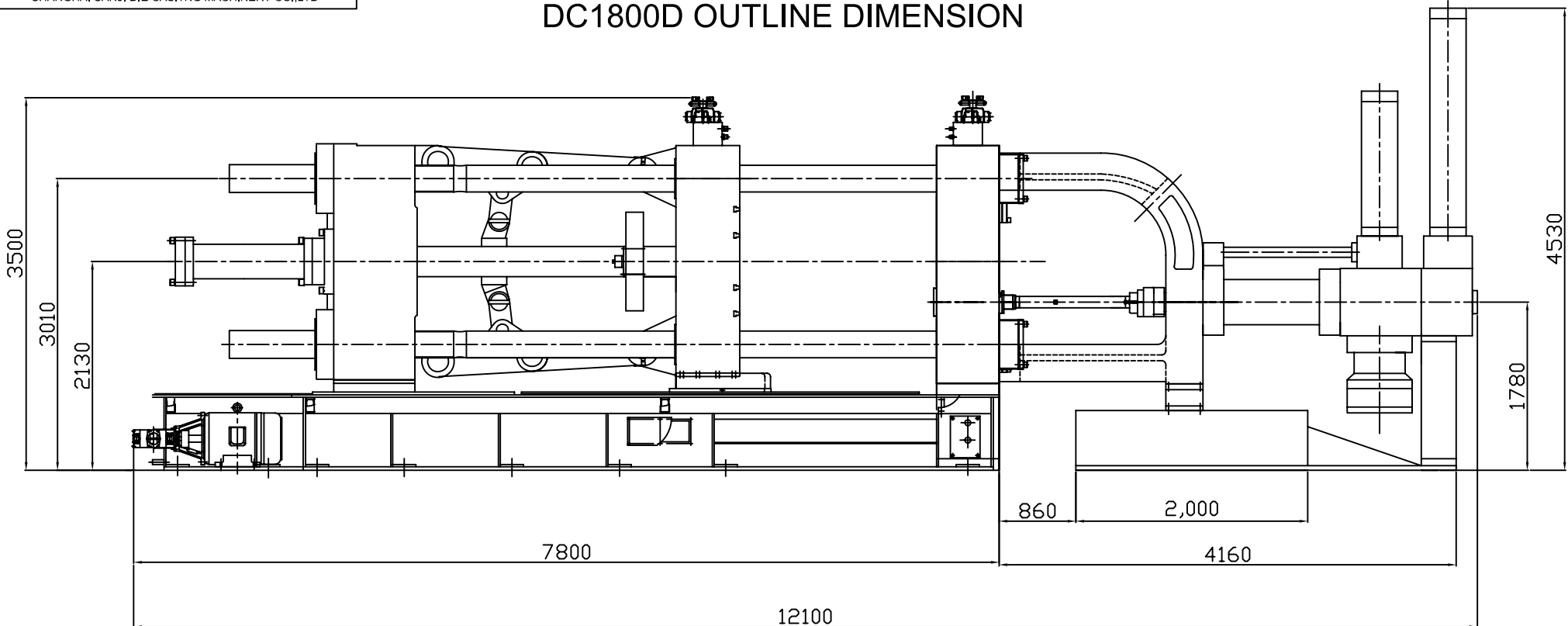
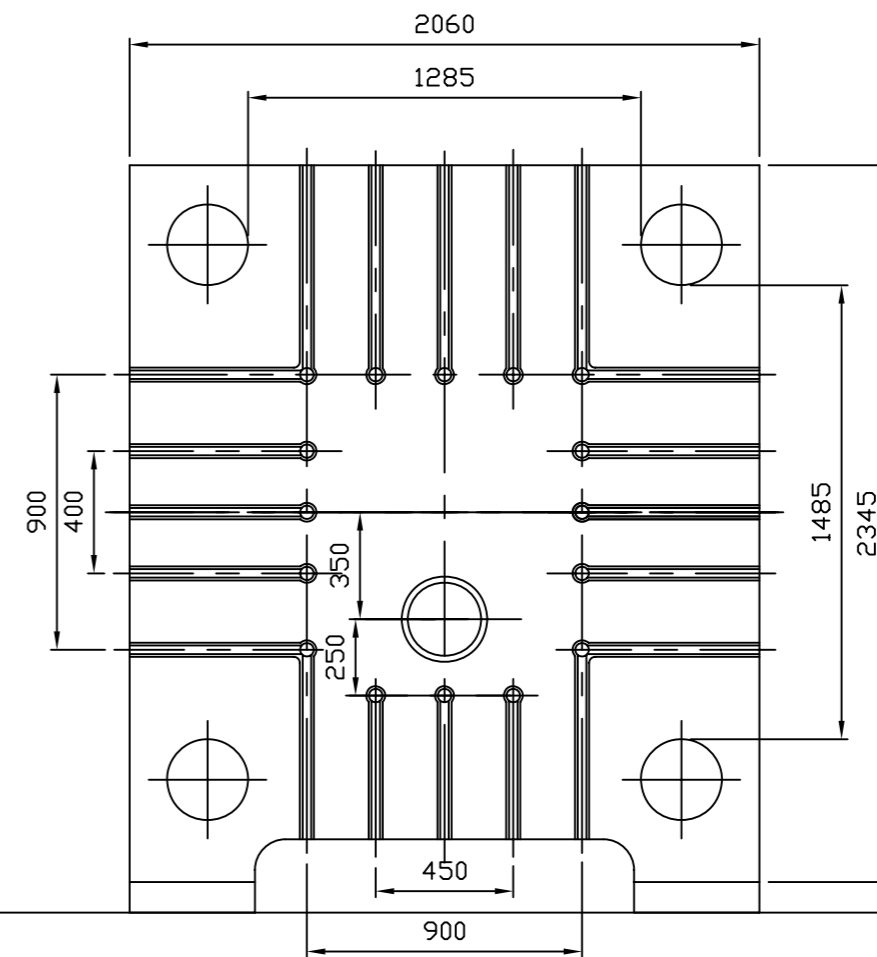
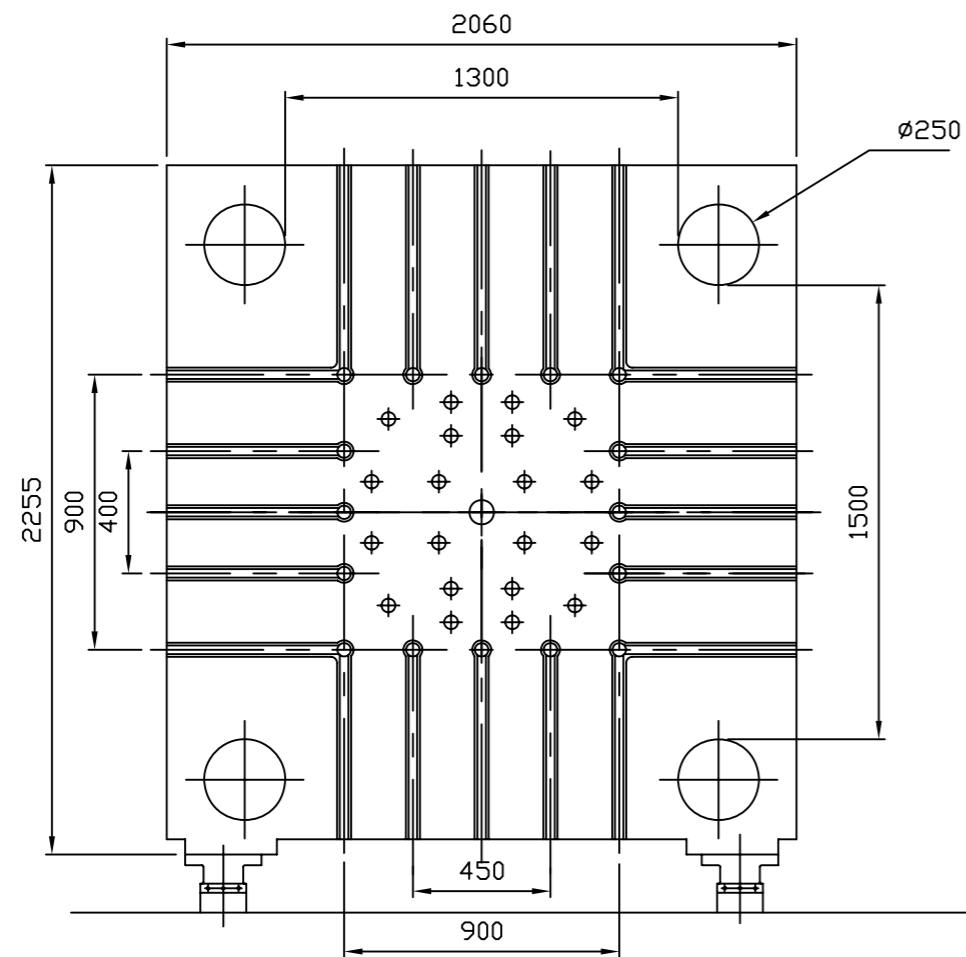


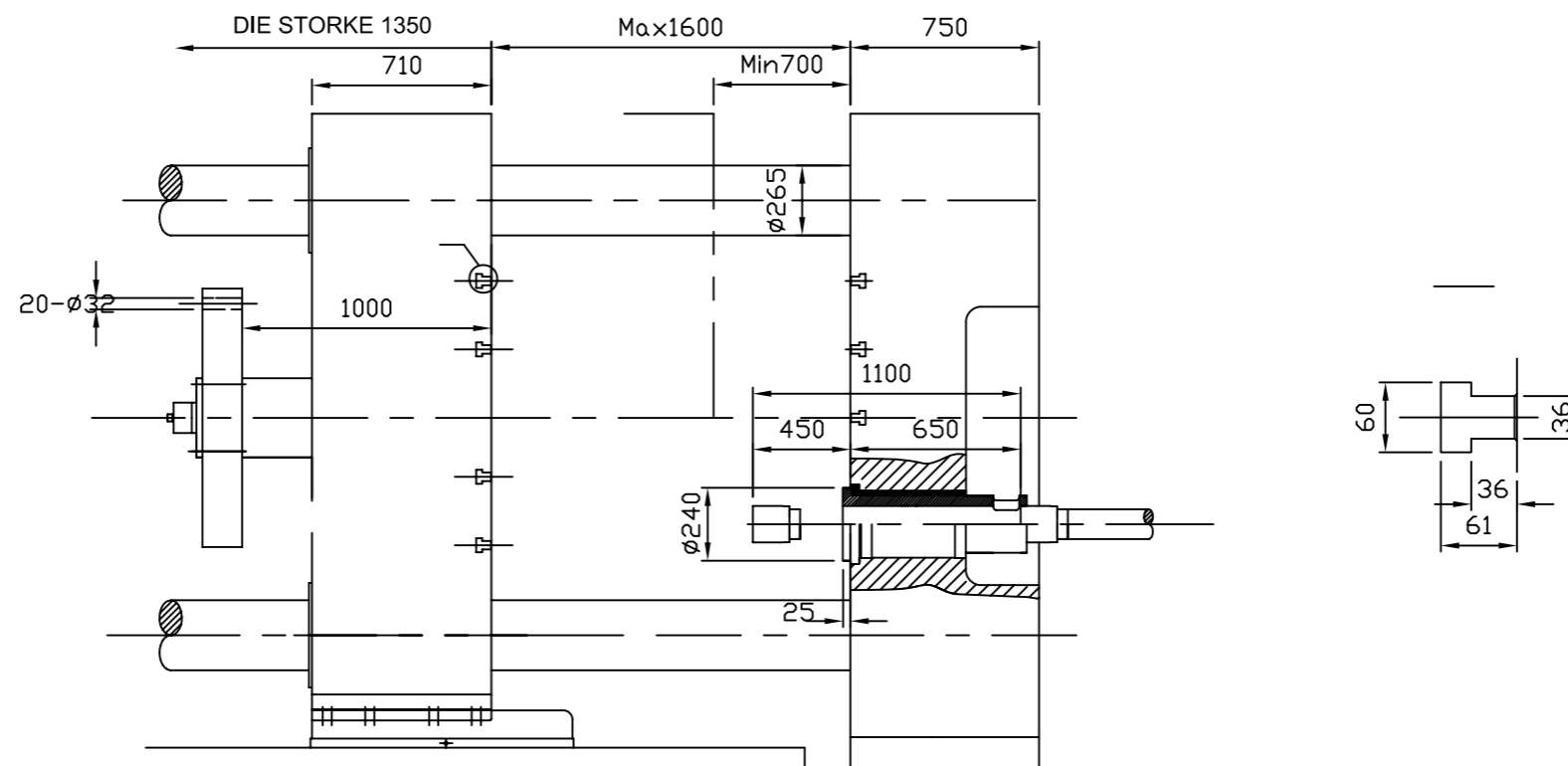
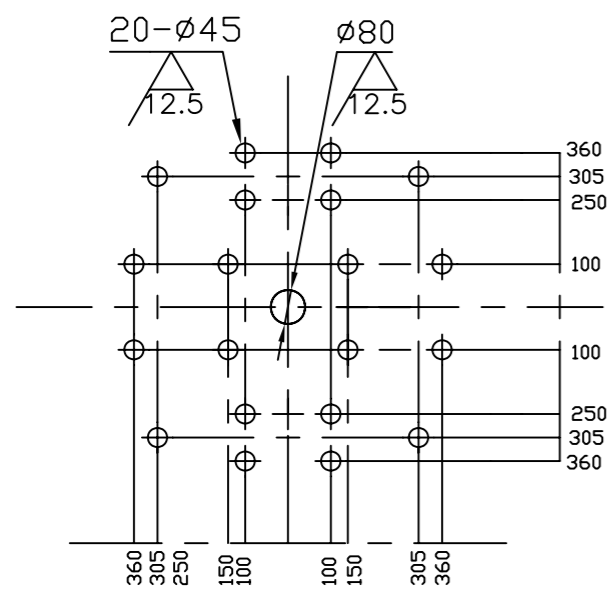
DC1800D OUTLINE DIMENSION



DC1800D OUTLINE DIMENSION



EJECTOR HOLE POSITION



上海三基冷室压铸机主要技术参数表
SANJI COLD CHAMBER
DIE-CASTING MACHINE SPECIFICATIONS

项目 ITEMS	单位 UNIT	DC-1800C	
锁模部分 CLAMPING UNIT			
锁模力	CLAMPING FORCE	KN	18000
模板尺寸	Platen Size	mm	2060x2260
哥林柱间隔	Space between Tie Bar	mm	1300X1500(WxH)
哥林柱直径	Tie Bar Diameter	mm	250
锁模行程	Die Stroke	mm	1000
模板厚薄距离	Die Height	mm	700-1600
射料部分 INJECTION UNIT			
射料力	Injection Force	KN	530-1250
跟踪距离	Plunger Tip Penetration	mm	450
射料位置	Shot Position	mm	-350
压射头直径	Standard Tip Diametre	mm	110,130,150
射料重量(铝)	Casting Weight	Kg	29
铸造压力	Injection Pressure	Mpa	56-126
最大铸造面积	Injection Area (400MPa)	cm2	4,500
顶出部分 EJECTION UNIT			
顶出压力	Ejection Force	KN	500
顶出行程	Ejection Stroke	mm	200
油泵与电机 Pump and Motor			
液压泵	Hydraulic Pump	2-Vame Pump (045-028) (60bar,140bar)	
电机	Electric Motor:		
1.液压泵电机	For Hydraulic Pump	2-37kw 380V	
2.调模电机	For Die Height Adjust	USE Hydralic Motor 用液压马达	
3.润滑电机	For Lub.Pump	2-30w 220V	
其它 OTHERS			
油箱容积	Tank Capacity	litre	2000
机身尺寸	Overall dimensions	(L x W x H)m	12 X 3 .7X 4.6
出机重量	Height of Machine	TON	99